

*honors
(not AP®)*

Heating Curves*

Unit: Thermal Physics (Heat)

NGSS Standards/MA Curriculum Frameworks (2016): HS-PS3-1, HS-PS3-2, HS-PS3-4a

AP® Physics 2 Learning Objectives/Essential Knowledge (2024): N/A

Mastery Objective(s): (Students will be able to...)

- Determine the amount of heat required for all of the phase changes that occur over a given temperature range.

Success Criteria:

- Variables are correctly identified and substituted correctly into the correct equations.
- Algebra is correct and rounding to appropriate number of significant figures is reasonable.

Language Objectives:

- Explain what the heat is used for in each step of a heating curve.

Tier 2 Vocabulary: specific heat capacity, curve, phase

Labs, Activities & Demonstrations:

- Evaporation from washcloth.
- Fire & ice (latent heat of paraffin).

Notes:

phase: a term that relates to how rigidly the atoms or molecules in a substance are connected.

solid: molecules are rigidly connected. A solid has a definite shape and volume.

liquid: molecules are loosely connected; bonds are continuously forming and breaking. A liquid has a definite volume, but not a definite shape.

gas: molecules are not connected. A gas has neither a definite shape nor a definite volume. Gases will expand to fill whatever space they occupy.

plasma: the system has enough heat to remove electrons from atoms, which means the system is comprised of particles with rapidly changing charges.

* Heating curves are usually taught in chemistry. However, the topic was moved from chemistry to physics in the Massachusetts Curriculum Frameworks starting in 2016.

honors
(not AP®)

phase change: when an object or substance changes from one phase to another through gaining or losing heat.

Breaking bonds requires energy. Forming bonds releases energy. This is true for the bonds that hold a solid or liquid together as well as for chemical bonds (regardless of what previous teachers may have told you!)

i.e., you need to add energy to turn a solid to a liquid (melt it), or to turn a liquid to a gas (boil it). Energy is released when a gas condenses or a liquid freezes. (*E.g.*, ice in your ice tray needs to give off heat in order to freeze. Your freezer needs to remove that heat in order to make this happen.)

The reason evaporation causes cooling is because the system (the water) needs to absorb heat from its surroundings (*e.g.*, your body) in order to make the change from a liquid to a gas (vapor). When the water absorbs heat from you and evaporates, you have less heat, which means you have cooled off.

Calculating the Heat of Phase Changes

heat of fusion (ΔH_{fus}) (sometimes called “latent heat” or “latent heat of fusion”): the amount of heat required to melt one kilogram of a substance. This is also the heat released when one kilogram of a liquid substance freezes. For example, the heat of fusion of water is $334 \frac{\text{J}}{\text{g}} \equiv 334 \frac{\text{kJ}}{\text{kg}}$. The heat required to melt a sample of water is therefore:

$$Q = m\Delta H_{fus} = m(334 \frac{\text{J}}{\text{g}})$$

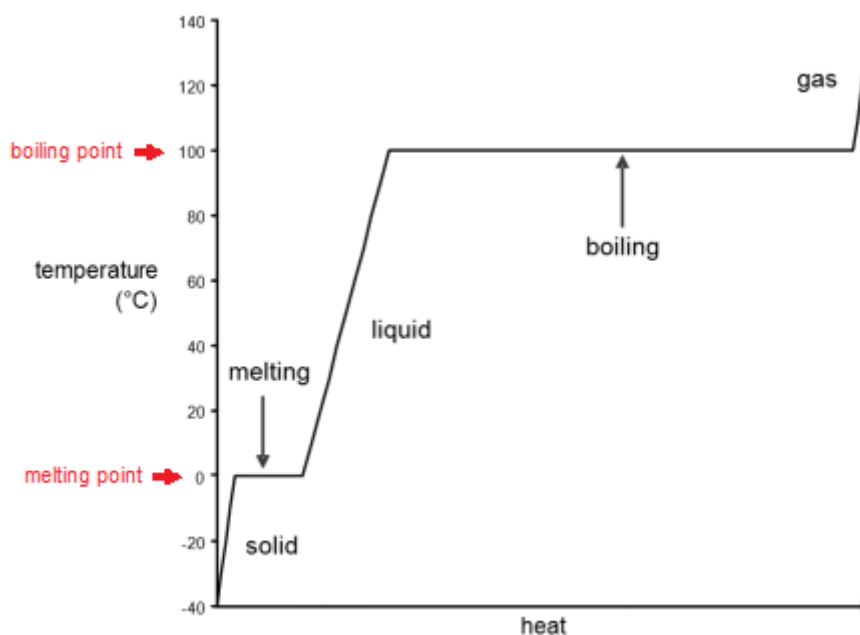
heat of vaporization (ΔH_{vap}): the amount of heat required to vaporize (boil) one kilogram of a substance. This is also the heat released when one kilogram of a gas condenses. For example, the heat of vaporization of water is $2260 \frac{\text{J}}{\text{g}} \equiv 2260 \frac{\text{kJ}}{\text{kg}}$. The heat required to boil a sample of water is therefore:

$$Q = m\Delta H_{vap} = m(2260 \frac{\text{J}}{\text{g}})$$

(Again, pay attention to the units. If your mass is in kg, you will need to use the units $\frac{\text{kJ}}{\text{kg}}$ for your ΔH values; if your mass is in g, you will need to use the units $\frac{\text{J}}{\text{g}}$ for your ΔH values.)

*honors
(not AP®)*

heating curve: a graph of temperature vs. heat added. The following is a heating curve for water:



In the “solid” portion of the curve, the sample is solid water (ice). As heat is added, the temperature increases. The specific heat capacity of ice is $2.11 \frac{\text{kJ}}{\text{kg}\cdot^{\circ}\text{C}}$, so the heat required is:

$$Q_{\text{solid}} = mC\Delta T = m(2.11 \frac{\text{kJ}}{\text{kg}\cdot^{\circ}\text{C}})(\Delta T)$$

In the “melting” portion of the curve, the sample is a mixture of ice and water. As heat is added, the ice melts, but the temperature remains at 0°C until all of the ice is melted. The heat of fusion of ice is $334 \frac{\text{kJ}}{\text{kg}}$, so the heat required is:

$$Q_{\text{melt}} = m\Delta H_{\text{fus}} = m(334 \frac{\text{kJ}}{\text{kg}})$$

In the “liquid” portion of the curve, the sample is liquid water. As heat is added, the temperature increases. The specific heat capacity of liquid water is $4.18 \frac{\text{kJ}}{\text{kg}\cdot^{\circ}\text{C}}$, so the heat required is:

$$Q_{\text{liquid}} = mC\Delta T = m(4.18 \frac{\text{kJ}}{\text{kg}\cdot^{\circ}\text{C}})(\Delta T)$$

*honors
(not AP®)*

In the “boiling” portion of the curve, the sample is a mixture of water and water vapor (steam). As heat is added, the water boils, but the temperature remains at 100°C until all of the water has boiled. The heat of vaporization of water is $2260 \frac{\text{kJ}}{\text{kg}}$, so the heat required is:

$$Q_{\text{boil}} = m\Delta H_{\text{vap}} = m(2260 \frac{\text{kJ}}{\text{kg}})$$

In the “gas” portion of the curve, the sample is water vapor (steam). As heat is added, the temperature increases. The specific heat capacity of steam is approximately $2.08 \frac{\text{kJ}}{\text{kg}\cdot^{\circ}\text{C}}$ (at 100°C; the specific heat capacity of steam decreases as the temperature increases), so the heat required is:

$$Q_{\text{gas}} = mC\Delta T = m(2.08 \frac{\text{kJ}}{\text{kg}\cdot^{\circ}\text{C}})(\Delta T)$$

Steps for Solving Heating Curve Problems

A heating curve problem is a problem in which a substance is heated across a temperature range that passes through the melting and/or boiling point of the substance, which means the problem includes heating or cooling steps and melting/freezing or boiling/condensing steps.

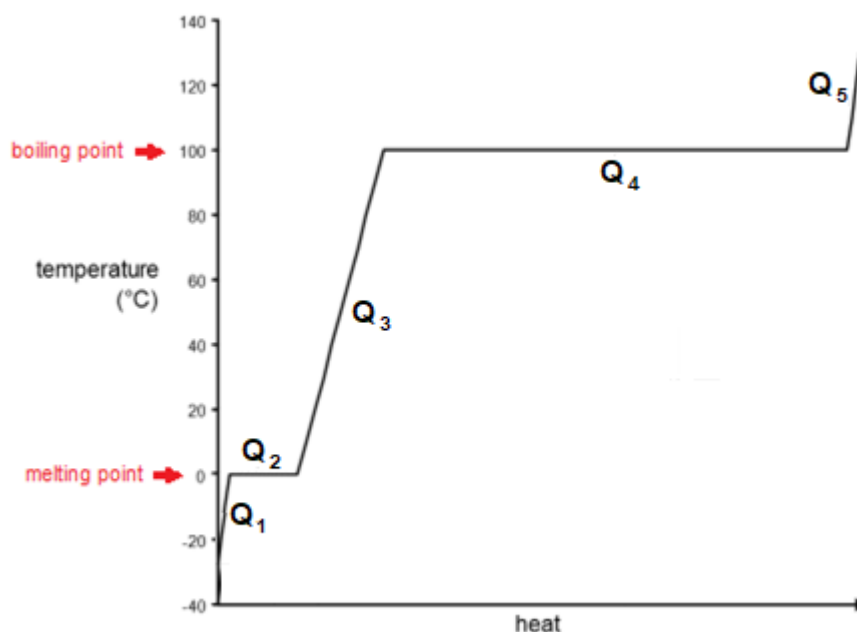
1. Sketch the heating curve for the substance over the temperature range in question. Be sure to include the melting and boiling steps as well as the heating steps.
2. From your sketch, determine whether the temperature range in the problem passes through the melting and/or boiling point of the substance.
3. Split the problem into:
 - a. Heating (or cooling) steps within each temperature range.
 - b. Melting or boiling (or freezing or condensing) steps.
4. Find the heat required for each step.
 - a. For the heating/cooling steps, use the equation $Q = mC\Delta T$.
 - b. For melting/freezing steps, use the equation $Q = m\Delta H_{\text{fus}}$.
 - c. For boiling/condensing steps, use the equation $Q = m\Delta H_{\text{vap}}$.
5. Add the values of Q from each step to find the total.

*honors
(not AP®)*

Q: How much heat would it take to raise the temperature of 15.0 g of H₂O from -25.0 °C to +130.0 °C?

A: The H₂O starts out as ice. We need to:

1. Heat the ice from -25.0 °C to its melting point (0 °C).
2. Melt the ice.
3. Heat the water up to its boiling point (from 0 °C to 100 °C).
4. Boil the water.
5. Heat the steam from 100 °C to 130 °C.
6. Add up the heat for each step to find the total.



1. heat solid: $Q_1 = mC\Delta T = (15)(2.11)(25) = 791.25 \text{ J}$
2. melt ice: $Q_2 = m\Delta H_{fus} = (15)(334) = 5010 \text{ J}$
3. heat liquid: $Q_3 = mC\Delta T = (15)(4.181)(100) = 6270 \text{ J}$
4. boil water: $Q_4 = m\Delta H_{vap} = (15)(2260) = 33900 \text{ J}$
5. heat gas: $Q_5 = mC\Delta T = (15)(2.08)(30) = 936 \text{ J}$
6. $Q = Q_1 + Q_2 + Q_3 + Q_4 + Q_5$
 $Q = 791 + 5010 + 6270 + 33900 + 936 = 46910 \text{ J}$

Heating Curves

Big Ideas

Details

Unit: Thermal Physics (Heat)

*honors
(not AP®)*

3. **(S)** A 0.045 kg block of silver at a temperature of 22°C is heated with 20.0 kJ of energy. You want to determine the final temperature and what the physical state (solid, liquid, gas) of the silver at that temperature.
- a. Sketch the heating curve for silver. Label the starting temperature, melting point, and boiling point on the y-axis.
- b. Calculate the total heat required by calculating the heat for each step until the entire 20.0 kJ is accounted for.

Answers: liquid, 1369°C